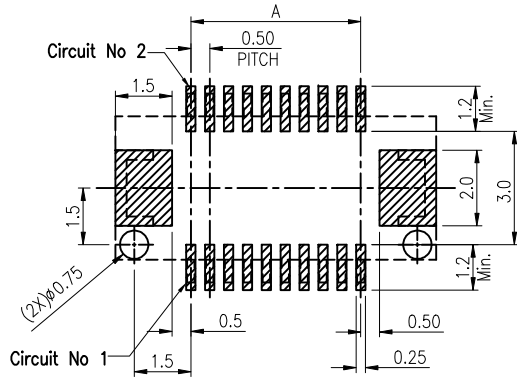
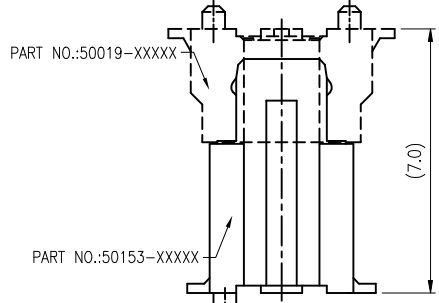
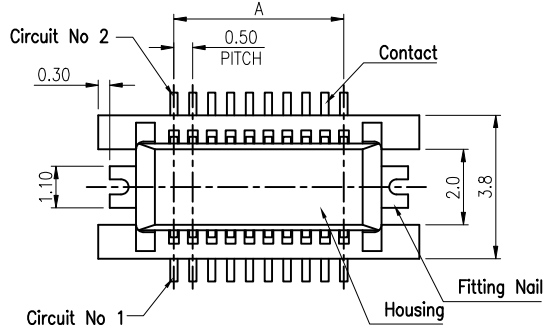


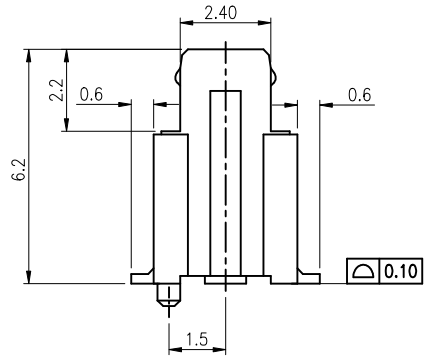
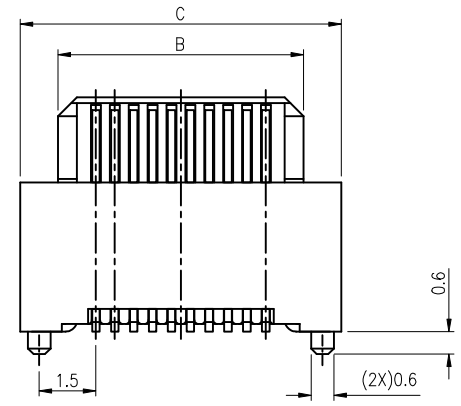
RECOMMENDED PCB LAYOUT  
GENERAL TOLORANCE  $\pm 0.05$   
WITHOUT BOSS



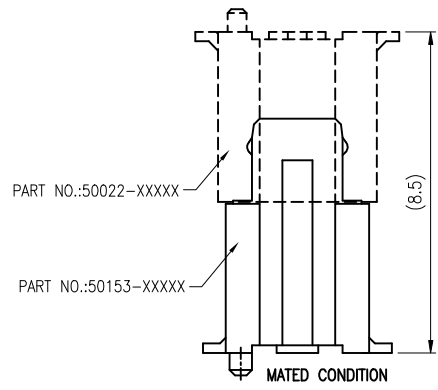
RECOMMENDED PCB LAYOUT  
GENERAL TOLORANCE  $\pm 0.05$   
WITH BOSS



MATED CONDITION



MATED CONDITION



MATED CONDITION

- NOTES:
- MATERIAL:
    - HOUSING: THERMOPLASTIC, HIGH TEMP.,UL94V-0;
    - CONTACTS: COPPER ALLOY.
    - FITTING NAIL: COPPER ALLOY.
  - FINISH:
    - CONTACT:
      - 50 $\mu$  MIN. NICKEL UNDERPLATING OVER ALL
      - 1:GOLD FLASH PLATING(1~3 $\mu$ ) OVER ALL
      - N:100~200 $\mu$  MATT TIN PLATING OVER ALL
      - C:15 $\mu$  GOLD PLATING ON CONTACT AREA
      - D:30 $\mu$  GOLD PLATING ON CONTACT AREA
    - FITTING NAIL:
      - 50 $\mu$  MIN. NICKEL UNDERPLATING OVER ALL
      - 100~200 $\mu$  PURE MATT TIN PLATING OVER ALL
  - REFLOW SOLDER CAPABLE TO 260°C PER ACES SPEC.
  - SPEC. PLS. REFER TO PS-50037-xxxx-xxx
  - PACKAGE PLS. REFER TO 88071-xxxxA-TRP OR 88071-xxxxB-TRP

6. PART NUMBER

50153-XXX X X-XXX

NO OF CKT

XXX	Housing Color	Halogen Free	Polarization	PACKAGE
001	Black	HF	with boss	88071-xxxxB-TRP
002	Black	HF	without boss	88071-xxxxA-TRP
004	Black	HF	with boss	88071-xxxxB-TRP-U

PACKING

- 0:TAPE REEL
- 1:TUBE PACKAGE

PLATING

- 1:GOLD FLASH OVER ALL
- N:MATT TIN
- D:30 $\mu$  GOLD ON CONTACT AREA
- C:15 $\mu$  GOLD ON CONTACT AREA

CKT	Dim A	Dim B	Dim C
10	2.0	4.0	6.0
16	3.5	5.5	7.5
20	4.5	6.5	8.5
30	7.0	9.0	11.0
40	9.5	11.5	13.5
50	12.0	14.0	16.0
60	14.5	16.5	18.5
70	17.0	19.0	21.0
80	19.5	21.5	23.5
100	24.5	26.5	28.5
120	29.5	31.5	33.5

QUALITY SYMBOLS MAJOR $\oplus$ CRITICAL $\otimes$ GENERAL TOLERANCES (UNLESS SPECIFIED) X. $\pm 0.5$ .X $\pm 0.25$ .XX $\pm 0.15$ .XXX $\pm 0.1$ ANGLES $\pm 2^\circ$	DRAWN BY MengMeng CHECKED BY BRAVE APPROVED BY BRAVE	DATE 23'/09/12 DATE 23'/09/12 DATE 23'/09/12		TITLE 0.5mm BTB Rept. SMT S/T D/R TYPE
	UNITS mm SCALE 5 : 5	SHEET NO. 1 OF 1		